

Bass Trombone

Charlie Barber

Taqsim

a fantasia for orchestra

Taqsim a fantasia for orchestra

Duration: c. 4 minutes

Notes:

Throughout the score, double barlines are used to articulate the 10/8 or 10/4 rhythmic structure.

String 'divisi' sections are divided between the two players reading from the same desk

Programme note:

Taqsim – a fantasia for orchestra

A *taqsim* is a traditional form of improvised solo music that typically precedes a classical Arabic, Kurdish, Greek, or Turkish composition. Usually performed by a single instrumentalist - sometimes accompanied by a percussionist or another supporting player - it serves as a free, expressive exploration of a mode or *maqam*.

While this work draws inspiration from this centuries-old practice and retains a sense of improvisatory freedom, it is a fully composed work conceived for a modern symphony orchestra. The main melodic theme is rooted in an instrumental form of Ottoman classical music, characterized by its rhythmic structure, using a specific 10/8 rhythmic pattern.

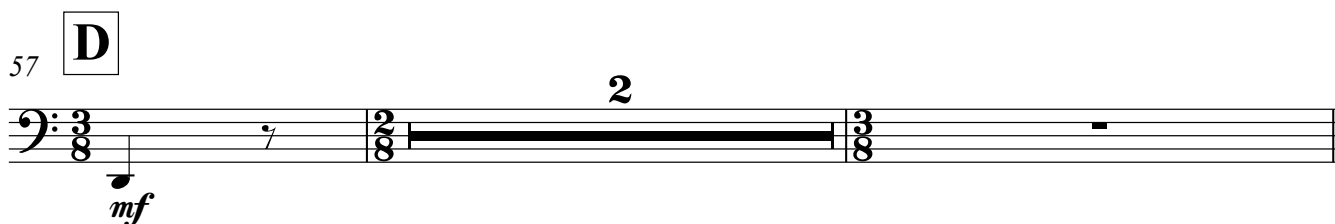
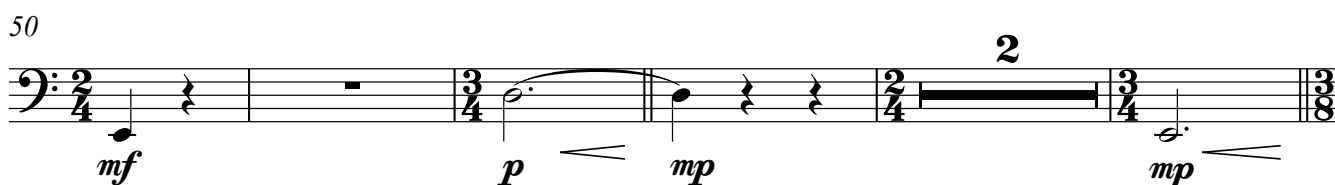
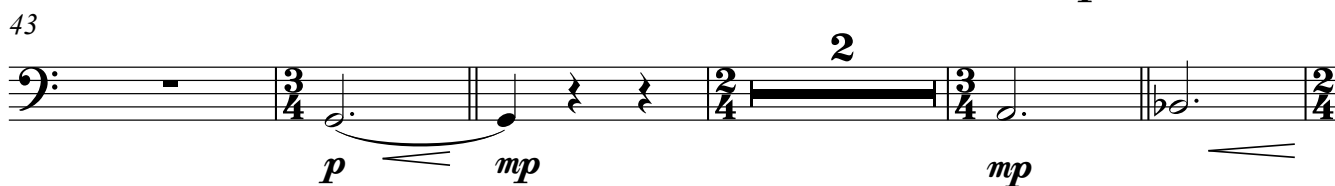
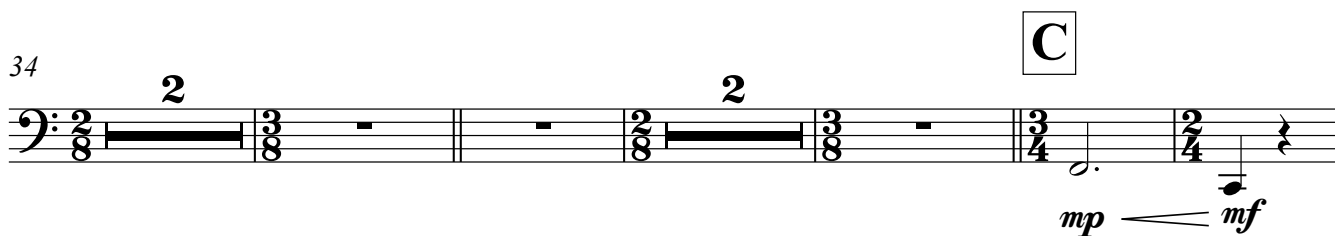
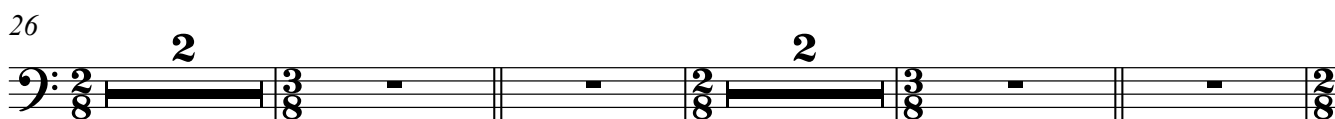
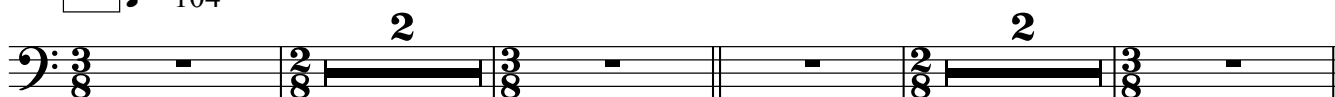
By expanding the intimate, spontaneous character of a solo *taqsim* into the rich palette of the orchestra, the piece transforms a personal act of ornamentation and discovery into a collective sonic journey - where individual instrumental voices intertwine, echo, and respond within a tapestry of rhythm and melody.

Charlie Barber, September 2025

Taqsim

a fantasia for orchestra

Charlie Barber

A ♩ = 104

Charlie Barber - Taqsim, a fantasia for orchestra

61

2

2


69

2

73 **E**

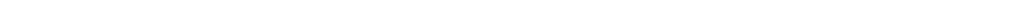
mp *f* *p* *mp*

81



p *f*

89 **F**



97

2

2

105

2 2

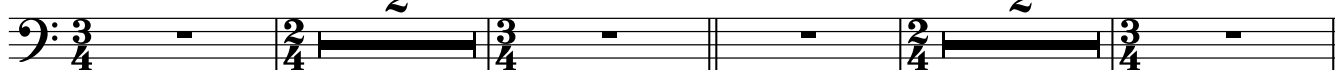
[illegible]

121

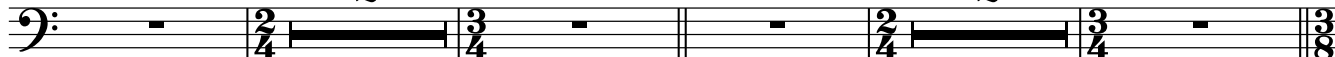
The musical score for Example 121 is written for a single staff in bass clef. The time signature is 2/4. The key signature has one flat (B-flat). The score consists of a single measure containing a whole note chord. The chord is composed of the notes B-flat, D, and F, with a '2' above the staff indicating a second interval. The measure is followed by a double bar line.

Charlie Barber - Taqsim, a fantasia for orchestra

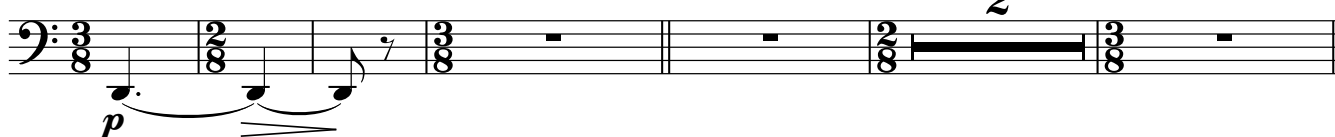
129 **H**



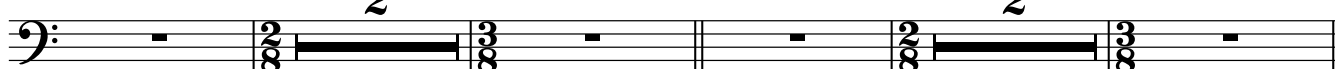
137



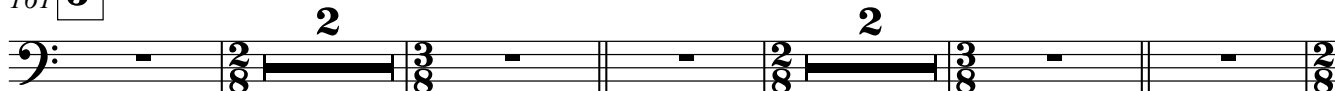
145 **I**



153



161 **J**



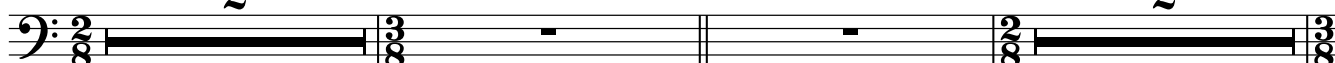
170



178 **K**



186



192



Bass Trombone

Charlie Barber - Taqsim, a fantasia for orchestra

197 **L**

204

211

215

220

228

236

244

252

mf *p* *mp* *mf* *p* *f* *mp* *ff* *Rit.*

M **N**